

NETWORK SERVICES

Ethernet Virtual Private Line (EVPL)

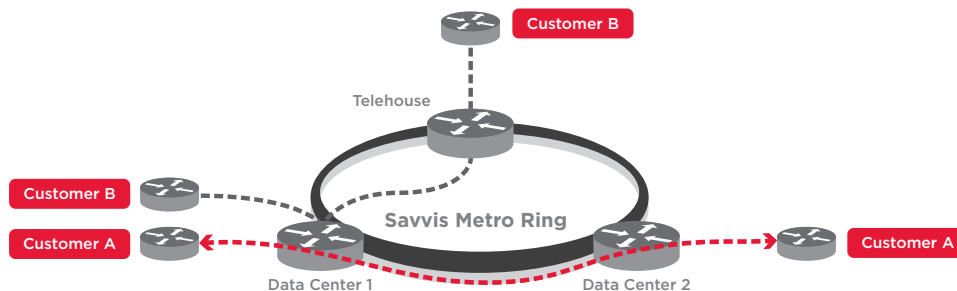


Metro Area High-Speed Point-to-Point Connectivity

With the steady increase in data backup and disaster recovery applications today, almost all businesses have a need to regularly and securely transport large amounts of information between multiple locations within a single metropolitan area. Traditionally, these solutions were costly, as there was little choice but to subscribe to expensive, analog leased lines. And since some companies needed to run non-IP data over their networks or had complex routing schemes, they wanted to control the protocols for their private networks.

Ethernet Virtual Private Line (EVPL) from Savvis addresses these concerns, offering secure, flexible, and transparent Layer 2 point-to-point connectivity across our state-of-the-art metro rings at a fraction of the cost of a dedicated private line. EVPL service rides over the Savvis Application Transport Network (ATN), which today includes nine metropolitan area network (MAN) rings around the United States and Europe, multiple data center facilities, and access to 12 established neutral carrier hotels. Because EVPL is provisioned as a Layer 2 connection, the customer maintains control over all traffic routing and switching, so running non-IP data protocols like NetBEUI, IPX/SPX, AppleTalk, and DecNet is not an issue.

The Savvis network affords virtually unlimited bandwidth between our data centers and Point of Presence (POPs), as well as carrier hotels, if you need to connect to alternate carriers. So whether you are doing a bulk transfer of data on a daily basis or periodic application backup and storage, or if you want access to a diverse carrier for diversity purposes, EVPL provides the connectivity you need. This architecture will also shorten the distance of any third-party local loops, as they would only need to reach the nearest node on a Savvis metro ring rather than their final destination.



Key Ethernet Virtual Private Line (EVPL) Service Highlights:

- Delivers a Layer 2 point-to-point solution over MPLS-based backbone
- Based upon a global Tier 1 IP network operated by Savvis
- Features nine metro rings in service: New York, Boston, Washington, D.C., Atlanta, Chicago, Dallas, San Francisco, Los Angeles, and London
- Supports bulk file transfers from data center to data center, or from data center to carrier hotel
- Offers flexible bandwidth options from 1MB to 1GB and multiple ranges in between
- Provides access to any carrier present in an on-net carrier hotel in a given metro ring — significantly increasing the number of provider choices
- Allows customers to define virtual local area network (VLAN) segments based on their requirements
- Includes comprehensive service level agreements (SLAs) for network performance and availability.

(continued on next page)

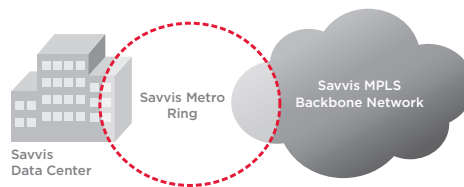
The Savvis Applications Transport Network

Application Transport Network (ATN) is Savvis' next-generation global business platform, built to deliver IT capabilities as services without requiring you to make significant investments in additional network hardware.

The integrated ATN architecture combines wide area networks (WANs), metro area networks (MANs), hosted area networks (HANs) and Savvis' core MPLS network into a single computing infrastructure that seamlessly connects network, data center, security, computing, and storage resources. Based on Cisco's IP-NGN™ technology, the network was engineered specifically to accommodate the diverse priorities of a broad range of customer applications. Advanced quality of service (QoS) capabilities and built-in security features optimize application performance in a network that will respond dynamically to changing demands.

Savvis' ATS is a portfolio of products that utilizes and enhances the ATN infrastructure. The ATS product line includes everything from unmanaged Internet access, to fully managed IP VPNs, to point-to-point Layer 2 services:

- ATS — Public IP
- ATS — Private IP
- ATS — Private IP Plus Internet
- ATS — VirtualLink and Ethernet Virtual Private Line



Key Ethernet Virtual Private Line (EVPL) Service Highlights

(continued)

- Encompasses customer support on a 24/7 basis, technical assistance and proactive monitoring
- Provides access to the SavvisStation Web portal for viewing utilization reports and deploying capacity tools

For more information about Savvis, visit www.savvis.com or call **1.800.SAVVIS.1 (1.800.728.8471)**.

Canada
Tel 1.877.387.3764

EMEA
Tel +44 (0)118 322 6000

Asia Pacific
Tel +65 6768 8000

Japan
Tel +81.3.5214.0151